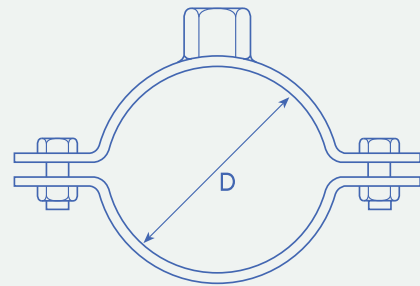


PIPE RINGS

| Pipe Size NB (inches) | D (mm) | Width (mm) | Thickness (mm) | Boss (mm) |
|-----------------------|--------|------------|----------------|-----------|
| 1/8 | 10.29 | 20 | 2.0 | 8 |
| 1/4 | 13.72 | 20 | 2.0 | 8 |
| 3/8 | 17.15 | 20 | 2.0 | 8 |
| 1/2 | 21.34 | 20 | 2.0 | 8 |
| 3/4 | 26.67 | 20 | 2.0 | 8 |
| 1 | 33.40 | 20 | 2.0 | 8 |
| 1 1/4 | 42.16 | 20 | 2.0 | 8 |
| 1 1/2 | 48.26 | 20 | 2.0 | 8 |
| 2 | 60.33 | 20 | 2.0 | 8 |
| 2 1/2 | 73.03 | 20 | 2.0 | 8 |
| 3 | 88.90 | 20 | 2.0 | 8 |
| 3 1/2 | 101.60 | 20 | 2.0 | 10 |
| 4 | 114.30 | 20 | 2.0 | 10 |
| 5 | 141.30 | 20 | 2.0 | 10 |
| 6 | 168.28 | 20 | 2.0 | 10 |



We also stock backing plates and threaded rod to suit.

STAINLESS STEEL FLANGES

Various flanges are available:

BS1560 (ANSI B16.5) from class 150 to 2500 lb inclusive.

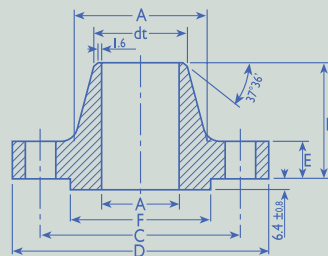
BS10 Table D to H.

BS 4504 Table 2.5 to 400.

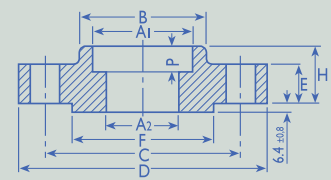
304, 304L, 316, 316L & 321.

All sizes.

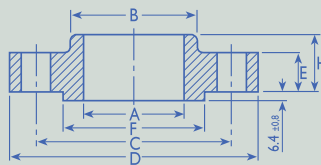
Please state style, grade, size and to what specification when ordering.



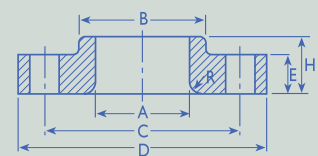
WELDING-NECK



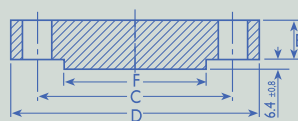
SLIP-ON



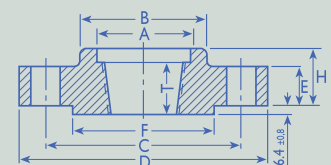
BLIND



THREADED



LAP-JOINT



SOCKET-WELD

